



MEGATRONE
INDUSTRIAL SOLUTIONS

Air Preparation Units

Modular Series FRL

(Filter Regulator Lubricator)



AIR PREPARATION UNITS

Modular Series FRL (Filter Regulator Lubricator)



FILTER REGULATOR COMBINATION – LUBRICATOR, MODULAR – 1/4, 3/8, 1/2, 3/4, 1"

Individual Filter- Regulator combination & Lubricator units easily removable mountable without disturbing the pipe line

Features :

- > Modular type for easy and fast maintenance
- > Suitable for wall mounting
- > Filter – Bronze filtering element
 - Separator and shield for efficient moisture separation
 - Press type manual drain for easy operation
- > Regulator – Diaphragm operated, relieving type
 - Pressure compensated by balanced poppet
 - Flow compensated with venturi in all models for fast response
 - Non raising 'Press to lock' adjusting knob for locking at any set pressure
- > Lubricator – Fog / Mist type Lubricator
 - Fine adjustment of lubrication
 - Lubrication proportional to flow
- > Steel bowl guard, bayonet type
- > Good flow and regulating characteristics



Technical Specifications

Model	MG-FRL-1	MG-FRL-2	MG-FRL-3	MG-FRL-4	MG-FRL-5
Medium	Compressed air				
Port size	G1/4	G3/8	G1/2	G3/4	G1
Pressure gauge port size	G1/8	G1/8	G1/8	G1/4	G1/4
Flow rate (lts/min)	500	1250	2800	3500	4000
Maximum supply pressure (bar)	10				
Regulating pressure range (bar)	0.2-2, 0.2-4, 0.5-7, 0.5-10 (Standard)				
Ambient temperature	-10° to +50° C				
Medium temperature	+5° to +50° C				
Filtration # (µm)	1, 5, 25, 40 (standard), 50, 100				
Min operating flow (lts/min)	12	40	45	50	50
Bowl capacity FRC (ml) (at maximum condensate level)	9	32	44	165	165
Bowl capacity Lubricator (ml) (at maximum oil level)	20	57	152	200	200
Recommended oil	ISO VG 32 (Servo System 32)				
Bowl material	Polycarbonate				
Installation	Vertical (as shown in the picture)				
Materials of construction	Aluminium, Bronze, Brass, Steel, Acetal, Polycarbonate, SS, Nitrile				
Optional accessories*	Pressure gauge				
Weight (Kg)	0.63	1.15	2.27	4.18	4.07

@ Supply pressure 7 bar, Set pressure 6 bar, Pressure drop $\Delta p = 1$ bar (For standard models).

For details see "How to order".

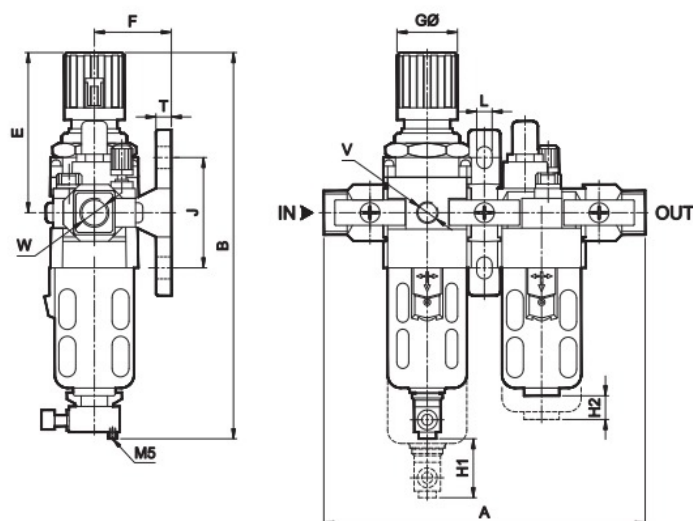
* For details refer optional accessories Cat No APA – 01 – C

AIR PREPARATION UNITS

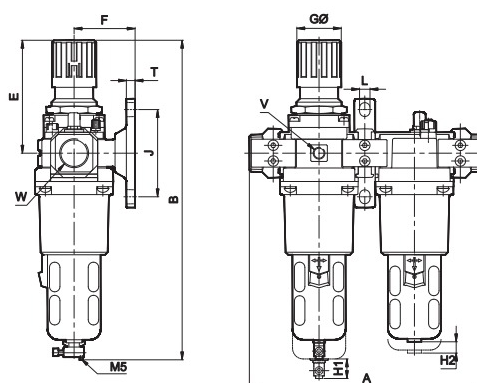
Modular Series FRL (Filter Regulator Lubricator)



Models MG-FRL-1, MG-FRL-2, MG-FRL-3



Models MG-FRL-4, MG-FRL-5



Model	W	V	A	B	E	F	GØ	J	L	T	H1	H2
MG-FRL-1	G1/4	G1/8	146	170	68	35	28	50	7	7	50	35
MG-FRL-2	G3/8	G1/8	182	220	95	45	40	70	7	7	50	45
MG-FRL-3	G1/2	G1/8	220	280	125	55	51	90	9	9	80	45
MG-FRL-4	G3/4	G1/4	270	370	130	70	51	100	12	10	80	45
MG-FRL-5	G1	G1/4	270	370	130	70	51	100	12	10	80	45

Precautions

1. Note the direction of flow before installation and connect piping accordingly.
2. Flush pipings for dirt, dust, rust and other foreign particles.
3. Install in clean atmosphere.
4. Nipples of taper threads (R) to be used with teflon tape. Ensure teflon tape doesnot enter the unit during tightening. Nipples of straight threads (G) to be used with sealing washer.
5. Polycarbonate bowls may get damaged and possibly fail if exposed to synthetic oils, thinner, solvents, trichloroethylene, kerosene or other aromatic hydrocarbons.

Pressure Setting

Pull the knob and adjust by turning the knob clockwise to increase the pressure. Push the knob back to its locked position.

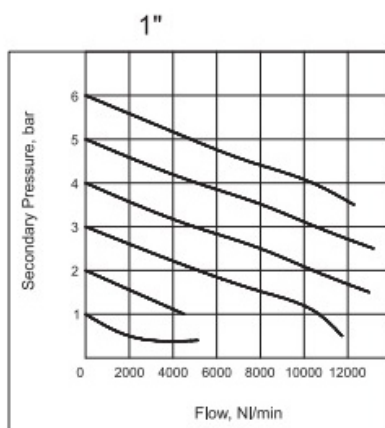
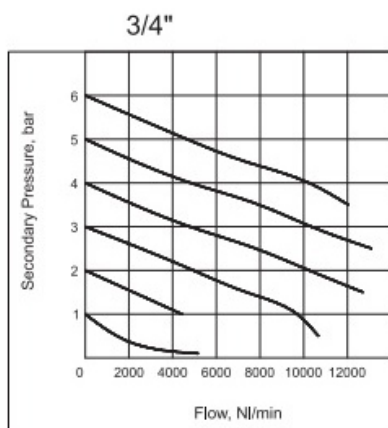
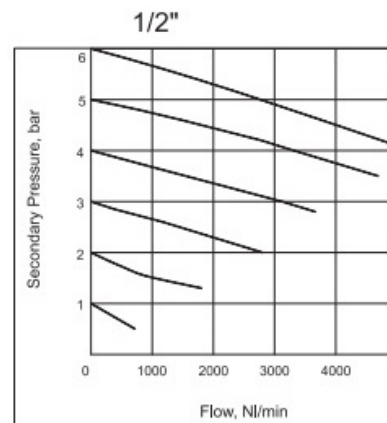
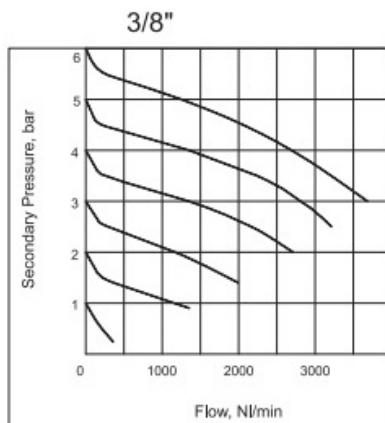
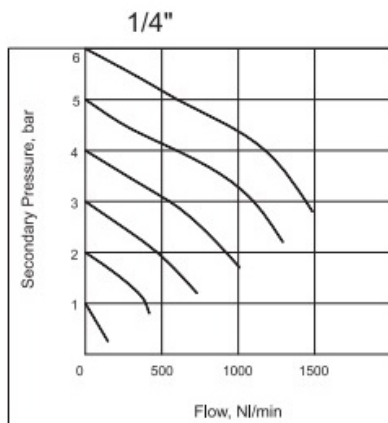
(Turning the knob counter clockwise will reduce the pressure)

AIR PREPARATION UNITS

Modular Series FRL (Filter Regulator Lubricator)



Flow Graphs



Flow graphs are for 40µm filtrations only

How to Order

Body & Port size	
MG-FRL-1	G1/4
MG-FRL-2	G3/8
MG-FRL-3	G1/2
MG-FRL-4	G3/4
MG-FRL-5	G1

Filtration in µm	
1	5
2	25
3	40 <small>(standard)</small>
4	50
5	100

Pressure range	
1	0.2-2 bar
2	0.2-4 bar
3	0.5-7 bar
4	0.5-10 bar <small>(standard)</small>



MEGATRONE
INDUSTRIAL SOLUTIONS

+91 97277 13898 | +91 97250 13898

sales@megatrone.in

B/501, Aries Heights, Nr. Surayam Flora, New Nikol,
Ahmedabad - 382350, Gujarat.

www.megatrone.in